

## Mine Optimization Workshop 2026

# OPTIMIZING THE STRATEGIC MINE PLAN: UNLOCKING INTRINSIC VALUE

Learn More @ <https://optisimmining.ca/>  
Learn More @ <https://optimalslope.com/>



- Geovia Whittle Software with 30-day Evaluation License for Educational Purposes
- OptimalSlope Software with 30-day Evaluation License for Educational Purposes
- OptiSim is an Educational Partner of Dassault Systemes, OptimalSlope & WAIMM
- Course is Available for Onsite and Online Delivery upon Request

## OBJECTIVES & WHO SHOULD ATTEND

### ***Learn how to improve your mine planning techniques***

- Understanding the principal concepts of strategic mine planning and improving economic performance such as revenue and cost
- Exploring practical stochastic pit-limit optimization, pushback designs and mine-life estimation
- Determining optimal profiles for slopes and pitwalls
- Learning the principles and concepts of mathematical programming and its applications to integrated mine planning and waste management
- Knowing about open pit/underground mining options optimization
- Understanding mine production scheduling and its financial risk management
- Discovering practical techniques in mine planning for grade, tonnage and metal uncertainty
- Exploring cut-off grades, stockpiling and waste management strategies
- Participating in hands-on computer labs on the applications of new optimization concepts
- Useful for mining, operations, project and exploration managers, mine planners, mine engineers, geotechnical engineers, geoscientists, geostatisticians, geologists, metallurgists, financial analysts, and directors

# IN-PERSON (Ghana)

**Date:** July 6 - 10, 2026

**Time:** 8:30am - 5:00pm GMT

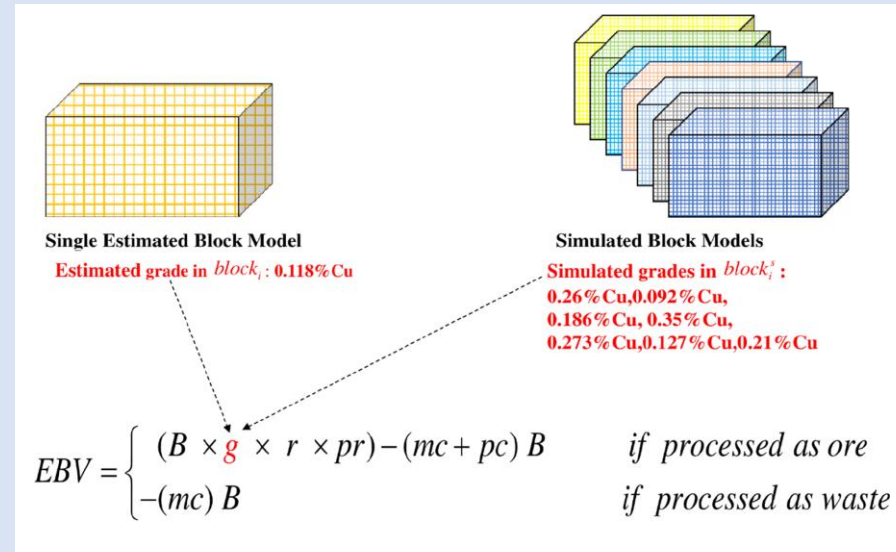
**Location:** Busua Beach Resort

## Course fee in USD

- Regular \$3,200 (Before June 15<sup>th</sup>, 2026)
- Early Bird \$3,000 (Before June 1<sup>st</sup>, 2026)
- Multi-person (≥2) \$3,000 (Before June 15<sup>th</sup>, 2026)
- Course fee includes hotel accommodation and all meals

**Registration Deadline**

June 15, 2026



## **COURSE OUTLINE**

### ***Principal and fundamental concepts in open-pit limit optimization***

- Strategic mine planning and economic performance
- Mining revenues and costs
- Pushbacks (phases) and ultimate pit limit optimization
- Practical pushback design with minimum mining width
- Optimal profiles for slopes and pitwalls (online guest lecture)

### ***Principal and fundamental concepts in strategic mine planning optimization***

- Life-of-mine production planning/scheduling
- Mine-life estimation
- Cut-off grade optimization and Lane's theory
- Stockpiling strategy
- Directional mining control
- Simultaneous optimization of mining value chain
- Multi-mine multi-process production scheduling
- Mine-to-mill production planning
- Blending and non-linear recovery in processing streams
- Mine planning considerations for contract mining

# Strategic mining options optimization, and integrated mine planning and waste management

- Characterization of mineralized mine waste as future resource
- Integrated production and waste disposal scheduling
- Strategic mining options optimization: open-pit mining, underground mining or both
- Open-pit / underground mining transition optimization

## Risk-based mine planning

- Mine production risk management and integrated optimization
- Stochastic pit limit optimization and pushback design
- Stochastic mine planning optimization methods
- An approach to mine planning with grade, tonnage and metal uncertainty

## Computer Labs with GEOVIA WHITTLE and OptimalSlope Software

- Case Studies: Oil Sands, Gold, Copper and Iron Ore Deposits
- Eleven detailed step-by-step hands-on computer application labs
- Additional special lab for determining optimal slope profiles for pitwalls
- Participants will need a laptop for lab exercises
- Software and printed copy of lectures and lab instructions will be provided
- Continuous online lab support beyond course end date

### ABOUT THE INSTRUCTOR

**Eugene Ben-Awuah** is a Professor of Mining Engineering at the School of Engineering and Computer Science, Laurentian University, Sudbury, Canada. He is also the IAMGOLD Research Fellow in Open Pit Mining. Eugene is a registered professional mining engineer and has extensive operational, consulting and research experience from Ghana, Canada and Australia in mine design and optimization, and mine production management.



He teaches and conducts research in strategic mining options optimization, integrated mine planning and waste management optimization, simulation of intelligent and autonomous mining systems, and modelling and optimization for sustainable resource development. He is a member of the West African Institute of Mining, Metallurgy and Petroleum (WAIMM) and the Canadian Institute of Mining, Metallurgy and Petroleum (CIM). He is Principal Mining Consultant for **OptiSim Mining Solutions**.

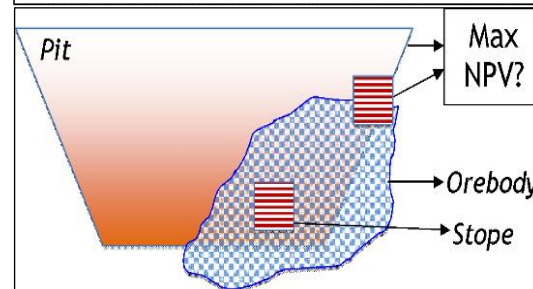
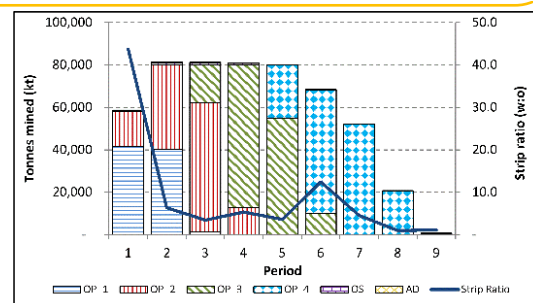
### REGISTRATION/ENQUIRIES

**Eugene Ben-Awuah, PhD, PEng**  
Professor, [Laurentian University](mailto:ebenawuah@optisimmining.ca)  
[ebenawuah@optisimmining.ca](mailto:ebenawuah@optisimmining.ca)  
[optisimmining.ca@gmail.com](mailto:optisimmining.ca@gmail.com)  
Phone: +1 705 923 3692

**Lawrence Omari-Mensah**  
Executive Secretary, [WAIMM](http://WAIMM)  
[lawrenceomensah@waimm.org](mailto:lawrenceomensah@waimm.org)  
Phone: +233 50 724 2841

### GUEST INSTRUCTOR

**Stefano Utili** is a Professor of Geotechnical Engineering at Newcastle University (UK), Chartered Engineer, and a Fellow of the Institution of Civil Engineering. He is the CEO of **Optimal Slope Software**.



"The training experience has been nothing short of exceptional in all aspects. Investing in mine optimization training helps mining professionals improve our decision making capabilities, increase longevity of resources and maintain a competitive edge." – **Mildred Kolson-Nutsuglo, Mining Engineer, Newmont Ghana Gold (2024).**

"Most young engineers are working with legacy Whittle models and the understanding is not there. This training demonstrates to attendees from first principle whatever are in the models." – **Felix Asamoah, Snr Mining Engineer, Newmont Ghana Gold – Ahafo (2024).**